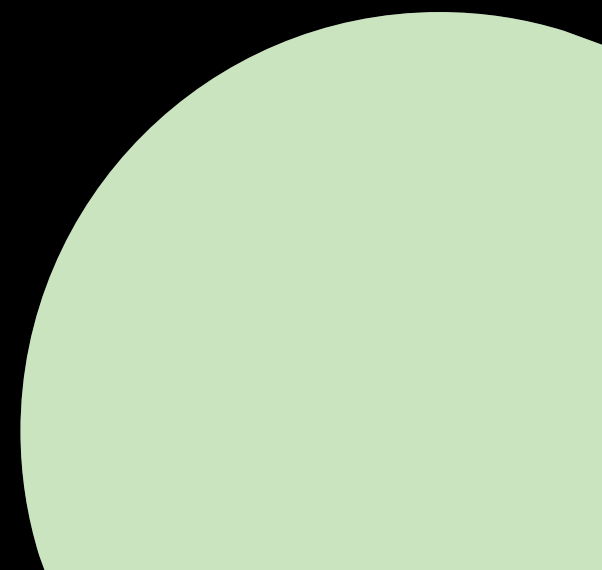
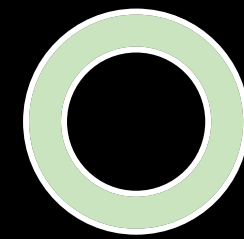


Meet the Teacher 2025/2026

P7b – Mrs Killin and Mrs Hind

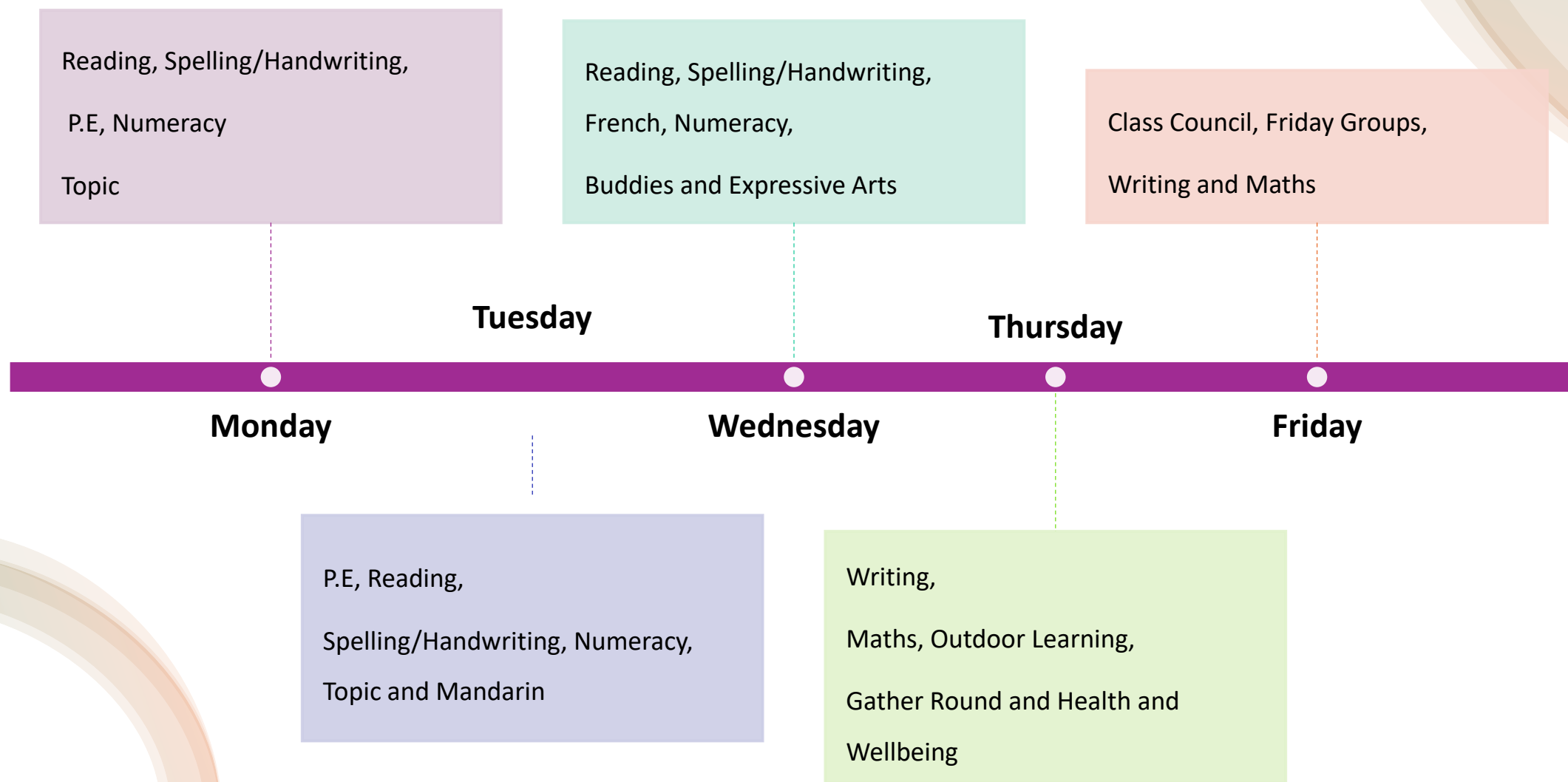




Overview

- A Typical Week in P7b
- Any Key Events (trips etc)
- I-Pads
- Our Refreshed Values
- Our Class Charter
- School Uniform and PE Days
- Family Learning Events
- Supporting Learning at Home
- Absence and Lateness
- Our Parent Council

A Typical Week in P7b



Key Events the Year

Camp – Tuesday 3rd- Friday 6th March

Risk Factory – Tuesday 24th March

P7 Show – Monday 15th June

3 day high school visit – Tuesday 16th, Wednesday 17th and Thursday 18th June

Leavers dance – Tuesday 23rd June



P7 iPads Home School Agreement

- **Agreement between pupils, Parents/Carers and the school**
- **Pupils** agree to look after their iPad – treating it with care, bringing it to school charged, using it only for its intended purpose etc.
- **Parents/Carers** agree to report any theft, loss or damage immediately, monitor the use of the iPad at home, ensure the iPad, case and charger are returned when the pupils leaves etc.
- **The School** agree to provide pupils with a range of learning experiences, provide parents/carers with advice and support if needed, ensure the iPad is working and any repairs are dealt with efficiently etc.



Home School Agreement

Responsible Use Agreement

- **Using the iPad** – treating it respectfully
- **Keeping myself Safe** – Keep passwords private, protect their identity, report inappropriate messages.
- **Being a good Cyber Citizen** – Only share photos and videos with people's permission, only share material related to learning.
- **Live online Learning** – code of conduct for rare occasions when learning at home.

Digital Safety Resources



<https://www.thinkuknow.co.uk>



<https://5rightsfoundation.com>



<https://www.saferinternet.org.uk>

Privacy

- Apple – Pupils have Managed ID's – all data is compliant with GDPR and Apple never share pupil information to third parties for marketing
- O365 – Compliant with GDPR – all pupils have an Office 365 account and all data, information and files are stored securely on their cloud account.
- Self Service Portal – Only apps that have been verified by Empowered Learning Team as educational and compliant with GDPR are accessible on iPads. Pupils cannot access iTunes to download any app they want.



Common Questions

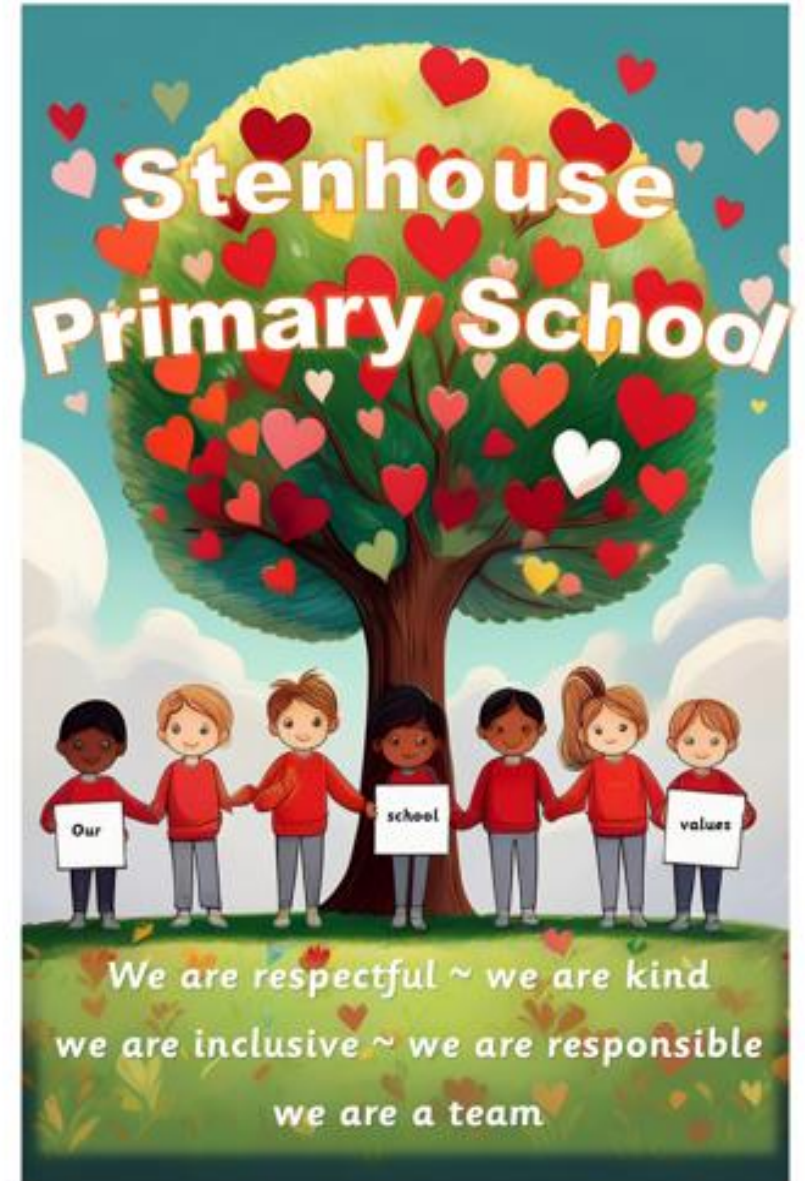
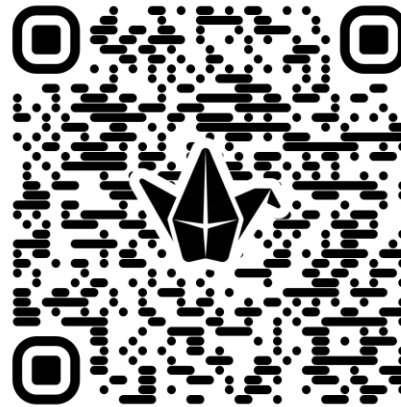
- Can my child use their own iPad instead?
- Do they have to bring it home?
- What happens if the iPad is stolen, damaged or lost?
- What if they forget to bring their iPad to school?
- I don't have WiFi at home so how can they use the iPad?
- Are the children going to be doing homework on the iPads at home?



Our Refreshed Values

Help us to recognise and celebrate when our children live by these values by sharing it through our **Values Padlet**.

We will celebrate this in weekly Gather Round assemblies where the children will receive a certificate.



Our Class Charter

Our school rules are: **Ready,
Respectful and Safe**

We expect all children to uphold these to support a positive learning environment that represents our values.

In P7 the children are creating their own charter to share how they will do this as a team.



School Uniform and PE Days

Our PE days are:

Monday and Tuesday

Wearing school uniform contributes to a positive school ethos, it helps to avoid discrimination and reduces peer pressure to wear expensive branded clothing.

Our school uniform consists of:

Jumper, sweatshirt, cardigan or hoodie

Red (P1 - P5), black (P6 + P7)

plain non-branded or with school logo.

Polo shirt, t-shirt or shirt

Red or white – plain non-branded or with school logo.

Skirt, dress, trousers, leggings or joggers

Black, grey or navy – plain or gingham pinafore non-branded

Trainers or school shoes

Uniform on PE Days:

Jumper, sweatshirt or hoodie

Red (P1 - P5), black (P6 + P7)

plain non-branded or with school logo

Polo shirt or t-shirt

Red or white – plain non-branded or with school logo

Leggings, joggers or shorts (mid length)

Black, grey or navy non-branded

Trainers

Please ensure that **all items of clothing are clearly labelled** so we can return them to you if lost.

For safety in the playground, during PE and on stairs, please do not wear crocs/open sandals, false nails, jewellery (studs are fine)

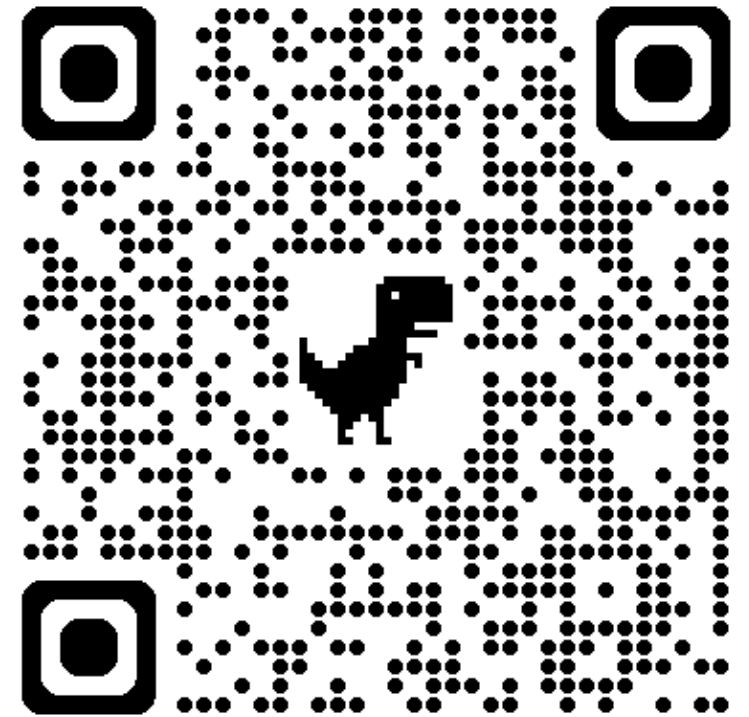
Support with School Meals, Milk and Uniform

You may be eligible for government support with **meal, milk and clothing**.

You can access information through **this link**:

Please make use of our **uniform exchange** in the school foyer that is available for everyone to access and contribute to.

Please just help yourself!



FAMILY LEARNING EVENTS and Progress Reporting

Term One	Term Two	Term Three	Term Four
<p>Thurs 25th Sep 2-3pm Sharing our Learning – Family Event - Maths</p> <p>Wed 8th & Thur 9th October – Parent/Carer Consultations 4pm - 7pm</p>	<p>Fri 24th October 11am – 1.30pm – Family Learning Event - Science</p> <p>Thurs 20th Nov 2-3pm – Sharing our Learning Family Event – Reading</p> <p>Fri 28th Nov – Family Learning Event 11am – 1.30pm</p>	<p>Thurs 29th Jan 2-3pm Sharing our Learning Family Event – Creativity</p> <p>Fri 13th March – Family Learning Event 11am – 1.30pm</p> <p>Wed 25th & Thur 26th March – Parent/Carer Consultations 4pm - 7pm</p>	<p>Thurs 7th May 2-3pm Sharing our Learning Family Event – Sustainability</p> <p>29th May 11am -1.30pm Family Event - Our Art Gallery</p> <p>Fri 5th June – Sport Day</p> <p>Fri 19th June – Pupil Reports sent home</p>

We will post short weekly updates of our learning on your children's **Online Learning Journal**.

Each term we will send home an **overview of learning and planned experiences**.

Supporting Learning at Home

Reading

Reading and being read to impacts positively on children's learning across the curriculum and supports mental health and wellbeing. We will be sharing **reading for pleasure books** for home and would encourage daily reading when possible.

Spelling

Your child will bring home their **weekly spelling words to practice at home if you would like to**. This is not compulsory.

Numeracy

We will share the current **Times tables** your child is working on to practice at home and they will have access to their **Sumdog** account to support mental arithmetic.

Absence and Lateness

An essential part of our safeguarding duty is our ability to account for all children each day. This is in place to ensure that every child leaves home and arrives at school safely.

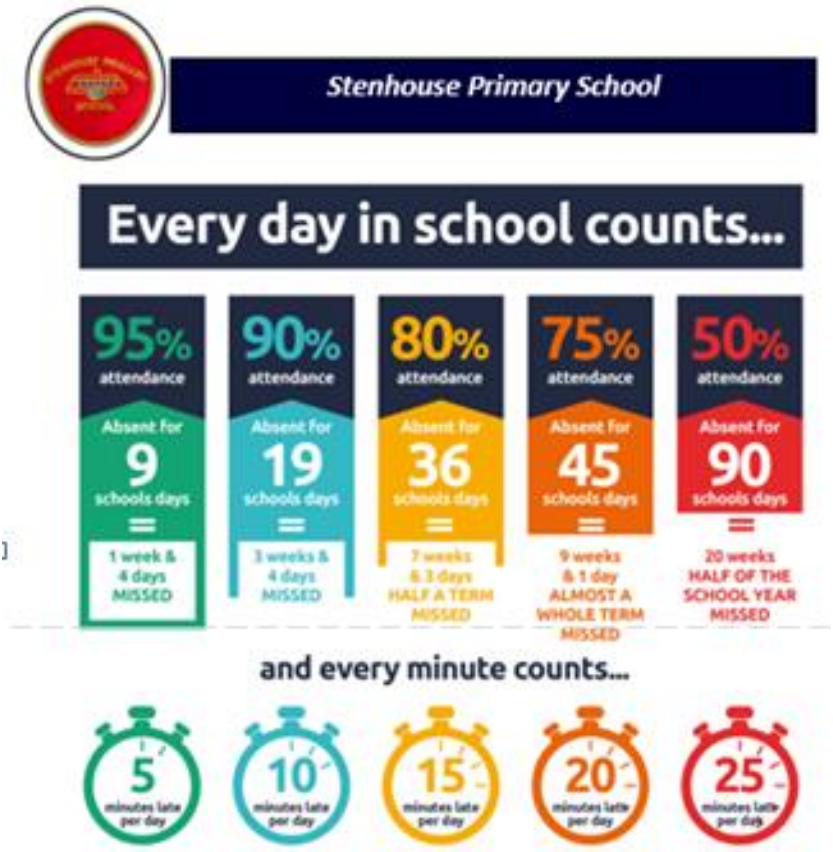
Our office staff are currently spending in excess of 2 hours each day following up on unaccounted absences and recording lateness.

Please support us to reduce this by:

Contacting the school office before 8.30 am through a phone call, voicemail, email or text to let us know if your child will be absent from school.

Arriving at school before 8.45am

Ensuring your contact details are up to date





Our Parent Council

We would love to have parental representation from every class within our Parent Council.

The Parent Council meets regularly with the school senior leadership team to **provide a link between school and parents, pupils and the community**. They **support and contribute views to school improvements** and support fundraising and school events.

This is a great opportunity to meet other parents/carers and to support our school.

If you are interested, please come along to our next meeting on **Friday 22nd August at 8.45am**



Empowered Learning iPad Project
Primary Home School Agreement
Responsible Use Agreement





Any Questions?